



4 DAY PUNGWE BUSH CAMP SAFARI

Join us on our 4 Day Pungwe Bush Camp Safari in Manyeleti Game Reserve. The Camp itself is small and intimate, with four luxurious tents set on raised wooden decks. Each tent is equipped with en-suite facilities and a private deck for relaxation. During the safari, you will have the opportunity to see the Big Five and other wildlife species in their natural habitat.

Pungwe Safari Camp also boasts a central dining and lounge area, where guests can come together and share their safari experiences over delicious meals, which are prepared by experienced local chefs, and refreshing drinks. The camp offers guided game drives and walking safaris, led by knowledgeable and experienced guides who will share their expertise on the flora and fauna of the area. Guests can also enjoy stargazing around the campfire at night, while listening to the sounds of the African bush. Be careful though, being completely unfenced, you may encounter unexpected visitors. There's really nothing like sitting under an open boma for dinner and suddenly having some Lions appear and lay down a small distance from you as you enjoy your meal.



COLLECTION & DROP OFF

Collection For Your safari:

You will be picked up by your driver from your hotel in Johannesburg at 06h00am and be transferred to OR Tambo Airport to connect with our partner shuttle by 06h45am. Five or more guests will be transferred by Nhongo Safaris private shuttle.

Once in Hoedspruit meet up with your guide and open safari vehicle and make your way to Manyeleti game Reserve check in to your accommodation is at 14h00pm.

Drop Off After Your Safari:

Our departure from Hoedspruit takes place after breakfast and exits the camp by 10h30am , and we arrive back in Johannesburg between 16h00 and 18h00pm.



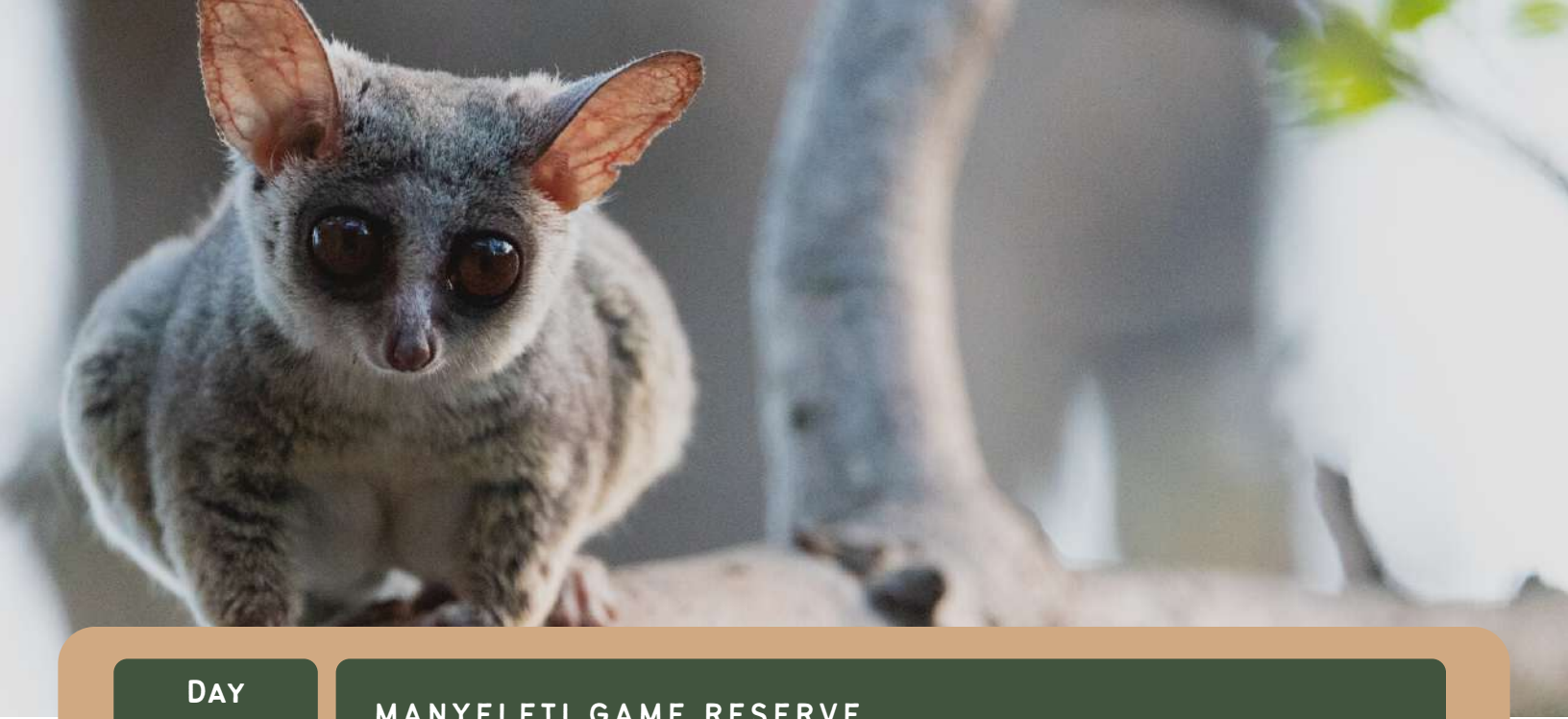
DAY TO DAY SUMMARY

DAY

1

JOHANNESBURG - MANYELETI

YOU WILL BE COLLECTED BY YOUR DRIVER/GUIDE FROM JOHANNESBURG AND THEN ON TO THE MANYELETI GAME RESERVE FOR THE START OF YOUR SAFARI. ONCE YOU ARRIVE AT THE MANYELETI GAME RESERVE, YOU WILL BE WELCOMED WITH A REFRESHING DRINK AND A BRIEFING ABOUT THE RESERVE AND ITS INHABITANTS. THE RESERVE IS SITUATED ON THE BORDER OF THE KRUGER NATIONAL PARK AND THE TIMBAVATI GAME RESERVE, MAKING IT A PRIME LOCATION FOR GAME VIEWING. THE MANYELETI GAME RESERVE IS ALSO KNOWN FOR ITS INCREDIBLE BIRDLIFE, WITH OVER 300 SPECIES RECORDED IN THE AREA. AS YOU EMBARK ON YOUR SAFARI ADVENTURE, KEEP YOUR EYES PEELED FOR THE BIG FIVE - LIONS, LEOPARDS, ELEPHANTS, RHINOS, AND BUFFALOS. DINNER IS SERVED ON YOUR RETURN IN THE EVENING. AS YOU DRIFT OFF TO SLEEP IN YOUR COMFORTABLE SAFARI TENT, YOU'LL BE SURROUNDED BY THE SIGHTS AND SOUNDS OF THE WILD.



DAY

2

MANYELETI GAME RESERVE

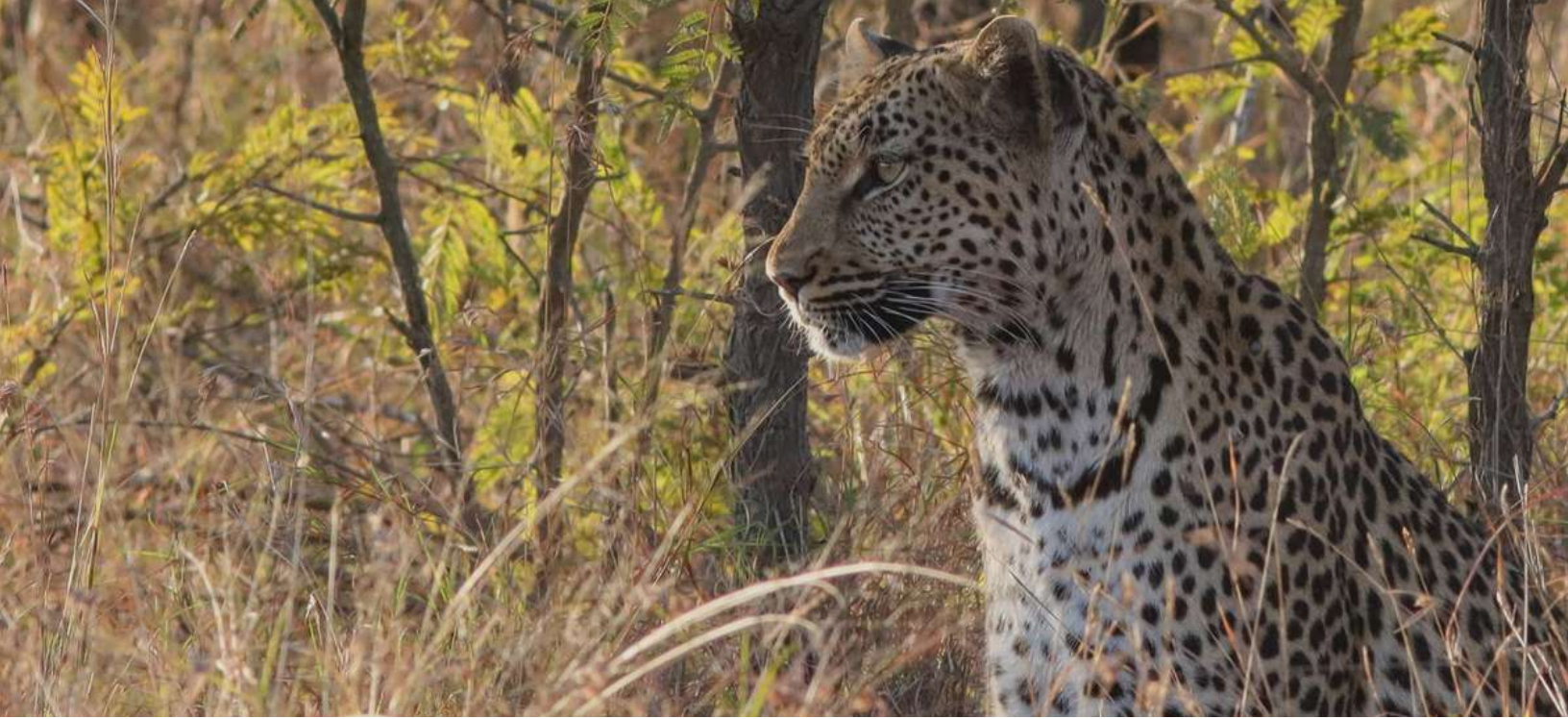
THIS MORNING, YOU'LL WAKE UP EARLY FOR A SUNRISE GAME DRIVE, WHERE YOU CAN WITNESS THE STUNNING AFRICAN SUNRISE AND SPOT SOME OF THE RESERVE'S EARLY MORNING WILDLIFE, RETURNING TO CAMP BY 08H30/09H00AM FOR BREAKFAST. AFTER BREAKFAST, YOU CAN CHOOSE TO TAKE A DIP IN THE REFRESHING POOL. ALTERNATIVELY, YOU CAN SIMPLY LOUNGE AROUND AND READ A BOOK WHILE TAKING IN THE BREATHTAKING SCENERY. DURING THE AFTERNOON/EVENING GAME DRIVE, YOU'LL HAVE THE OPPORTUNITY TO SEE A VARIETY OF WILDLIFE AS THEY BEGIN THEIR NOCTURNAL ACTIVITIES. YOUR EXPERIENCED GUIDE WILL TAKE YOU ON A THRILLING ADVENTURE THROUGH THE RESERVE, SHARING THEIR KNOWLEDGE AND EXPERTISE ABOUT THE ANIMALS AND THEIR BEHAVIORS.

DAY

3

MANYELETI GAME RESERVE

YOU'LL WAKE UP EARLY FOR A SUNRISE GAME DRIVE IN THE AFRICAN RESERVE, WITNESSING THE STUNNING SUNRISE AND SPOTTING WILDLIFE. AFTER BREAKFAST, YOU'LL JOIN A GUIDED BUSH WALK LED BY EXPERIENCED RANGERS, EXPLORING THE INTRICATE DETAILS OF THE



AFRICAN BUSH AND LEARNING ABOUT ITS DIVERSE FLORA AND FAUNA. YOU MAY ENCOUNTER VARIOUS SPECIES OF BIRDS, SMALL MAMMALS, AND ELUSIVE PREDATORS. THE KNOWLEDGEABLE GUIDES WILL PROVIDE INSIGHTS INTO THE ECOSYSTEM'S DELICATE BALANCE. ALTERNATIVELY, YOU CAN RELAX AND READ A BOOK WHILE TAKING IN THE BREATHTAKING SCENERY. AS THE SUN SETS, THE LANDSCAPE TRANSFORMS INTO A MAGICAL REALM WITH MYSTERIOUS SOUNDS OF THE NIGHT. GUIDES WILL USE POWERFUL SPOTLIGHTS TO CATCH GLIMPSES OF ELUSIVE PREDATORS, ALLOWING YOU TO WITNESS LIONESS PROWLING OR HYENAS ON THE HUNT.

DAY

4

MANYELETI - JOHANNESBURG

ENJOY YOUR LAST MORNINGS GAME DRIVE BEFORE RETURNING FOR BREAKFAST AND CHECK OUT FROM PUNGWE BY 10H30AM. AFTER CHECKING OUT, YOUR DRIVER / GUIDE WILL BE AWAITING TO TAKE YOU BACK TO JOHANNESBURG.



SAFARI INCLUDES

- 3 Night Accommodation at Pungwe Bush Camp
- Collection & Drop Off in Johannesburg or Nelspruit
- Open Vehicle Game Drives
- Daily Conservation/Entrance Fees
- Bush Walk
- Full Board Meals

SAFARI EXCLUDES

- Flights
- Gratuities
- Items of a Personal Nature
- Visas and Airport Tax



ACCOMMODATION

This Safari includes three nights accommodation at Pungwe Luxury Tented Camp. The tents are cleaned and serviced daily and feature twin beds and an en-suite bathroom.

MEALS

Full Board Meals are included in the package. There are restaurant facilities available all serving hot delicious food and beverages



GAME DRIVES

All daily Game Drives are included in the package and are conducted in open aired safari vehicles accompanied by an expert guide. The Open Safari vehicles have blankets and ponchos onboard for any weather changes.

CHILDREN

Children are welcome on this safari however due to safety and comfort, any children under 8 years of age, you will need to organize a private safari tour for your group, with no other guests onboard. Children under 12 years pay 50% of the adult rate. Children 12 years and above pay the full adult rate.



WHY BOOK WITH US?

- Guaranteed Departure with a minimum of two guests daily
- You save money – it costs less to book with us. No booking fees. No credit card surcharge
- Enjoy exceptional personalized service from your dedicated consultant
- Seamless travel arrangements – no travel stress
- Full financial protection – travel with confidence

WHAT TO PACK?

- Sunglasses & Hat & Sunscreen
- Closed shoes or open sandals (No high heel shoes)
- Jacket for early mornings and evenings
- Camera, Binoculars, Flashlight
- Passport for entrance procedures
- Bug repellent – can be purchased in camp