



Safari

ITINERARY

7 DAY ULTIMATE KRUGER SAFARI

During our 7 day ultimate safari, you will have the chance to spot the Big Five and other wildlife species while enjoying game drives and guided walks. At Moholoholo Wildlife Rehabilitation Centre, you will learn about their efforts to rehabilitate injured and orphaned animals before releasing them back into the wild.

Nestled beneath the majestic Drakensberg mountains lies Moholoholo Forest Camp, a intimate lodge situated amongst Africa's huge Quinine trees and home to a variety of bird and animal species. At the Rehabilitation Centre, visitors can witness firsthand the dedication and hard work of the staff as they care for animals such as lions, honey badgers, vultures and eagles. The centre also offers educational programs and guided tours to raise awareness about conservation efforts.



COLLECTION & DROP OFF

Collection For Your safari:

You will be picked up by your driver from Hoedspruit by 12h00pm and be transferred to Moholoholo. Five or more guests will be transferred by Nhongo Safaris private shuttle.

Drop Off After Your Safari:

Our departure from the Kruger National Park takes place after breakfast and exits the camp by 10h30am , and we arrive back in Johannesburg between 16h00 and 18h00pm.



DAY TO DAY SUMMARY

DAY

1

HOEDSPRUIT - MOHOLOHOLO

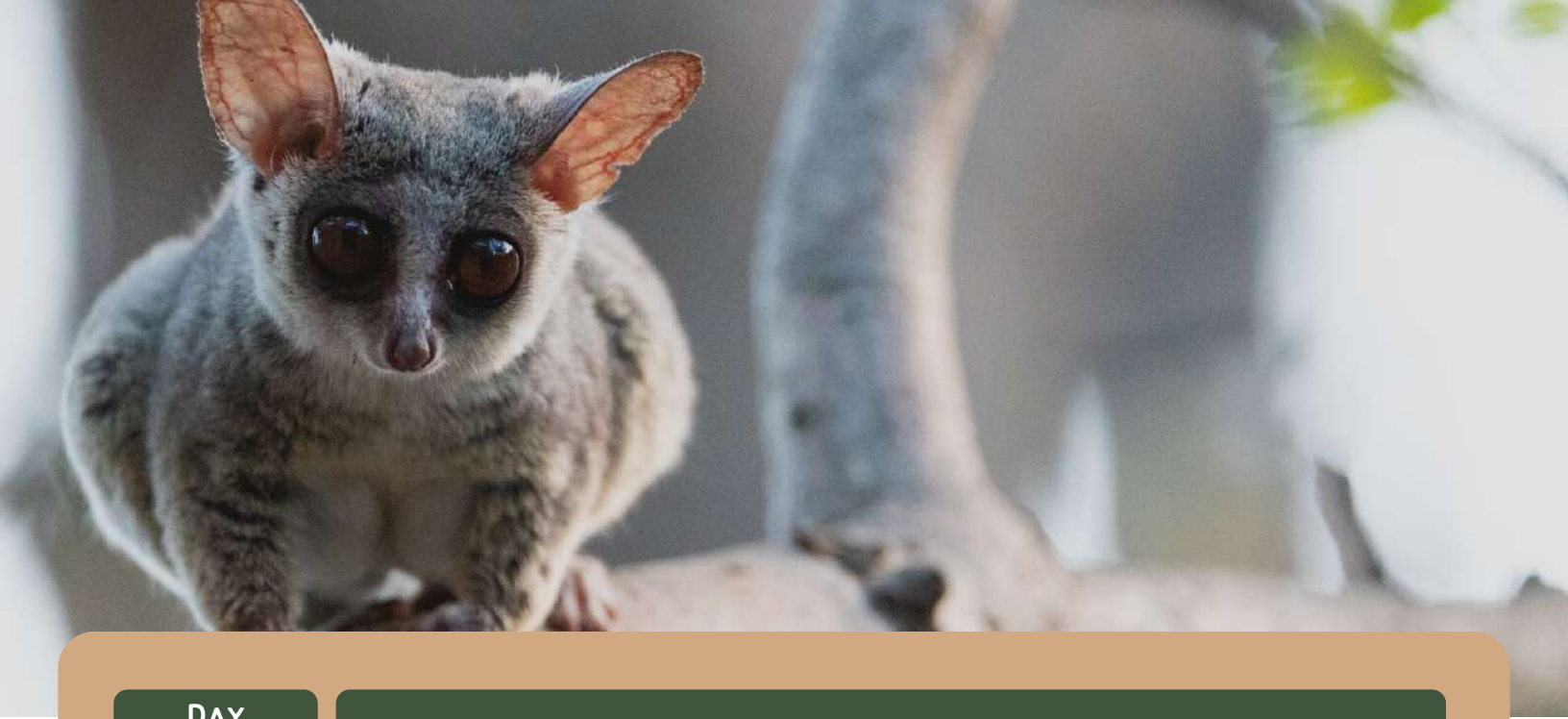
COLLECTION BY YOUR GUIDE FROM EITHER THE AIRPORT OR SHUTTLE TRANSFER IN HOEDSPRUIT, AND THEN ON TO FOREST CAMP FOR LUNCH AND CHECK IN. FOREST CAMP IS A BEAUTIFUL AND SECLUDED LODGE NESTLED IN THE HEART OF THE AFRICAN BUSH. UPON ARRIVAL, YOU WILL BE GREETED AND WELCOMED FROM THE FRIENDLY STAFF. AFTERNOON VISIT TO THE MOHOLOHOLO REHABILITATION CENTRE WHICH IS A WILDLIFE REHABILITATION CENTER THAT CARES FOR INJURED AND ORPHANED ANIMALS. VISITORS CAN OBSERVE THE ANIMALS UP CLOSE AND LEARN ABOUT THE CONSERVATION EFFORTS IN THE AREA.

DAY

2

KRUGER NATIONAL PARK

EARLY MORNING BUSH WALK AT FOREST CAMP BEFORE BREAKFAST, DEPARTURE FOR THE KRUGER NATIONAL PARK THROUGH THE ORPEN GATE, GAME DRIVE UP TO THE CAMP OF SATARA. AT SATARA, GUESTS CAN ENJOY A RELAXING AFTERNOON AT THE CAMP. DINNER AND THE NEXT DAY'S ACTIVITIES EXPLAINED BY YOUR GUIDE.



DAY

3

KRUGER NATIONAL PARK

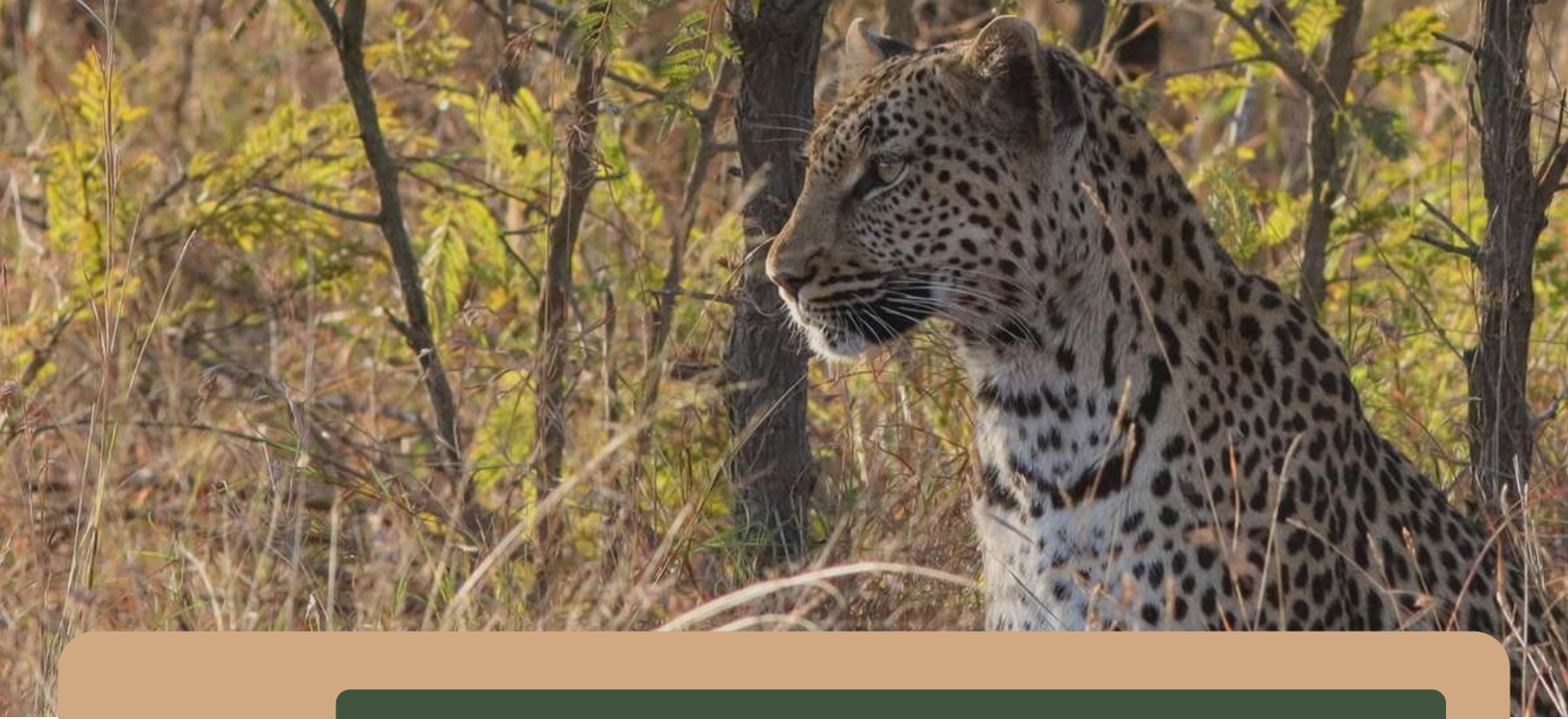
AN EARLY MORNING START BEFORE SUNRISE, IT'S THE PERFECT TIME TO EMBARK ON A GAME DRIVE, KEEP YOUR EYES PEELED FOR LIONS, ELEPHANTS, GIRAFFES, AND MORE AS YOU EXPLORE THE VAST WILDERNESS. BREAKFAST CAN BE ENJOYED AT ONE OF THE CAMPS OVERLOOKING THE SAVANNAH BEFORE WE RETURN TO CAMP MID-DAY FOR THE AFTERNOON. DURING THE MID-DAY BREAK, YOU CAN RELAX AND TAKE A NAP OR ENJOY A REFRESHING SWIM IN THE POOL. THIS EVENING YOU MAY ENJOY A NIGHT DRIVE CONDUCTED BY NATIONAL PARKS RANGERS RETURNING TO CAMP LATE EVENING. THE NIGHT DRIVE WILL GIVE YOU A CHANCE TO SPOT SOME OF THE NOCTURNAL ANIMALS THAT ARE RARELY SEEN DURING THE DAY. DON'T FORGET TO BRING WARM CLOTHING AS IT CAN GET CHILLY DURING THE NIGHT DRIVE.

DAY

4

KRUGER NATIONAL PARK

THIS MORNING WE ONCE AGAIN PACK OUR VEHICLE AND MAKE OUR WAY TO THE SOUTHERN REGIONS OF THE KRUGER PARK EXCITED TO SEE WHAT WILDLIFE WE WILL ENCOUNTER. THE SOUTHERN REGIONS OF THE KRUGER PARK ARE KNOWN FOR THEIR DIVERSE LANDSCAPES,



RANGING FROM GRASSY PLAINS TO ROCKY OUTCROPS, AND WE HOPE TO SPOT SOME OF THE BIG FIVE ANIMALS THAT CALL THIS AREA HOME. AFTER BREAKFAST WE ARRIVE AT OUR CAMP OF CHOICE FOR CHECK IN AFTER 14H00PM. DURING OUR AFTERNOON GAME DRIVE, WE WILL HAVE THE OPPORTUNITY TO EXPLORE THE AREA AND OBSERVE THE WILDLIFE IN THEIR NATURAL HABITAT. WE MAY EVEN WITNESS A PREDATOR-PREY INTERACTION OR CATCH A GLIMPSE OF SOME ELUSIVE NOCTURNAL ANIMALS DURING OUR AFTERNOON DRIVE.

DAY

5

KRUGER NATIONAL PARK

WE DEPART CAMP EARLY FOR YOUR MORNING BUSH WALK DEPARTING AT EITHER 04H30AM OR 05H00AM, DEPENDING ON THE TIME OF YEAR AND WEATHER CONDITIONS. DURING THE WALK, YOU WILL HAVE THE OPPORTUNITY TO OBSERVE A VARIETY OF WILDLIFE AND LEARN ABOUT THE FLORA AND FAUNA OF THE AREA FROM OUR EXPERIENCED GUIDES. THE MORNING WALK IS A GREAT WAY TO START YOUR DAY AND GET SOME EXERCISE IN WHILE ENJOYING THE NATURAL BEAUTY OF THE SURROUNDINGS. IT IS RECOMMENDED TO WEAR COMFORTABLE SHOES AND BRING A WATER BOTTLE TO STAY HYDRATED DURING THE WALK.



RETURN FOR BREAKFAST BY 08H30/09H00AM. AFTER BREAKFAST TIME TO RELAX FOR THE MORNING IN YOUR CHALET OR NEXT TO THE POOL. THIS AFTERNOON ITS TIME FOR ANOTHER GAME DRIVE TO EXPLORE THE VAST WILDLIFE AND CAPTURE SOME AMAZING PHOTOS. IN THE EVENING, GATHER FOR

DAY

6

KRUGER NATIONAL PARK

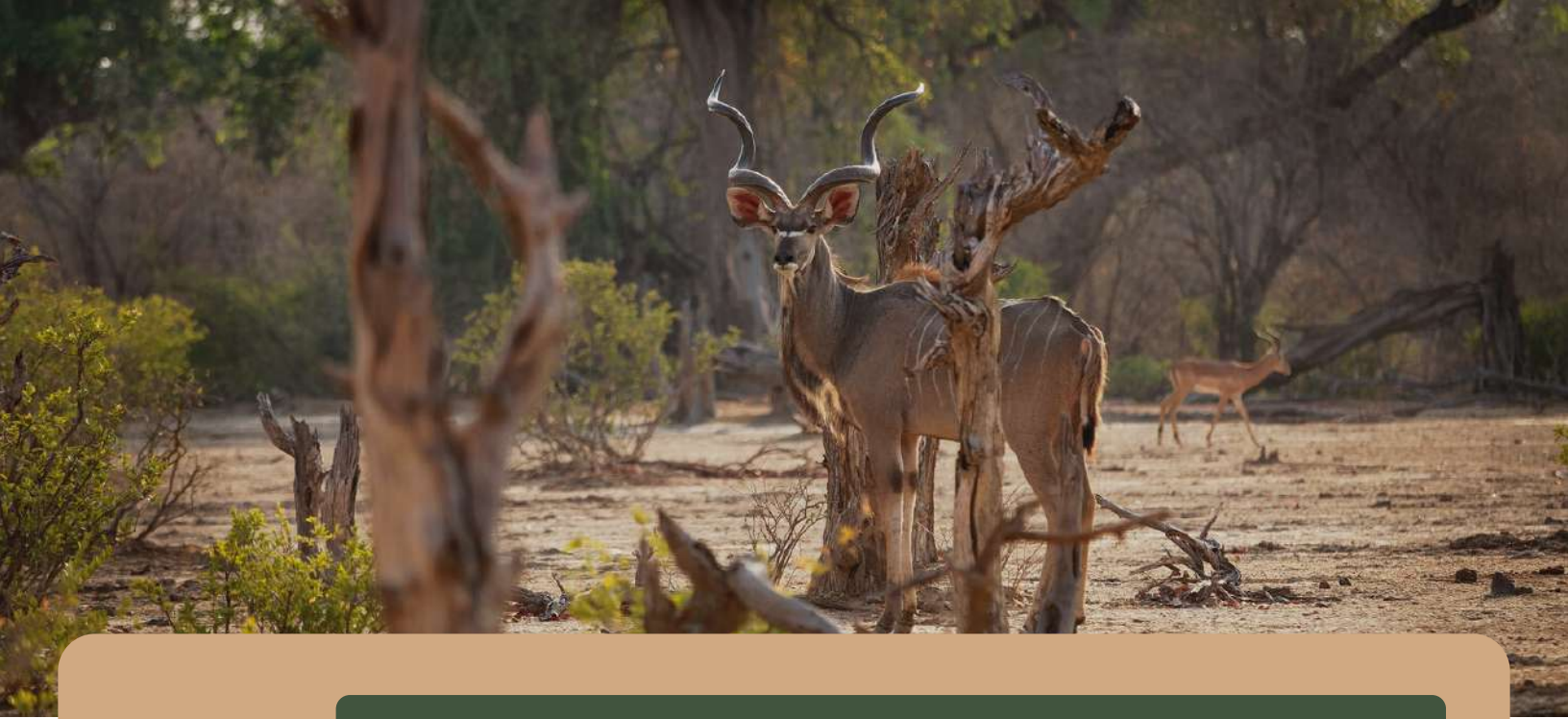
THIS MORNING YOU WILL RISE EARLY AND DEPART ON YOUR OPEN SAFARI VEHICLE AND DO AN EARLY MORNING DRIVE WITH YOUR LUGGAGE AS WE MAKE OUR WAY TO EITHER A PICNIC SPOT FOR BREAKFAST OR CAMP BEFORE CHECKING IN TO YOUR NEXT CAMP BY 14H00PM. DURING THE DRIVE, YOU WILL HAVE THE OPPORTUNITY TO SPOT SOME OF AFRICA'S ICONIC WILDLIFE SUCH AS LIONS, ELEPHANTS, AND GIRAFFES. THE EARLY MORNING DRIVE IS THE PERFECT TIME TO WITNESS THESE ANIMALS IN THEIR NATURAL HABITAT.

DAY

7

KRUGER PARK - JOHANNESBURG

WE DEPART EARLY FROM CAMP AS SOON AS THE GATES OPEN FOR A GAME DRIVE RETURNING FOR BREAKFAST



AFTER WHICH IT IS TIME TO PACK UP AND EXIT THE PARK
TO ARRIVE BACK IN JOHANNESBURG BY 16H00PM /
18H00PM

SAFARI INCLUDES

- 1 Night Accommodation Forest Camp
- 5 Nights Accommodation Kruger Park
- Collection & Drop Off in Johannesburg or Nelspruit
- Open Vehicle Game Drives
- Daily Conservation/Entrance Fees
- Bush Walk
- Moholoholo Rehabilitation Tour
- 6 x Dinners
- 6 x Breakfasts



SAFARI EXCLUDES

- Flights
- Gratuities
- Items of a Personal Nature
- Visas and Airport Tax

ACCOMMODATION

This Safari includes one nights accommodation at Forest Camp and five nights accommodation within the Kruger National Park. The huts are cleaned and serviced daily and feature twin beds and bathroom en-suite.



MEALS

6 Dinners & 6 Breakfasts are included in the package. There are restaurant facilities in every camp of the Kruger National Park all serving hot delicious food and beverages

GAME DRIVES

All daily Game Drives are included in the package and are conducted in open aired safari vehicles accompanied by an expert guide. The Open Safari vehicles have blankets and ponchos onboard for any weather changes.

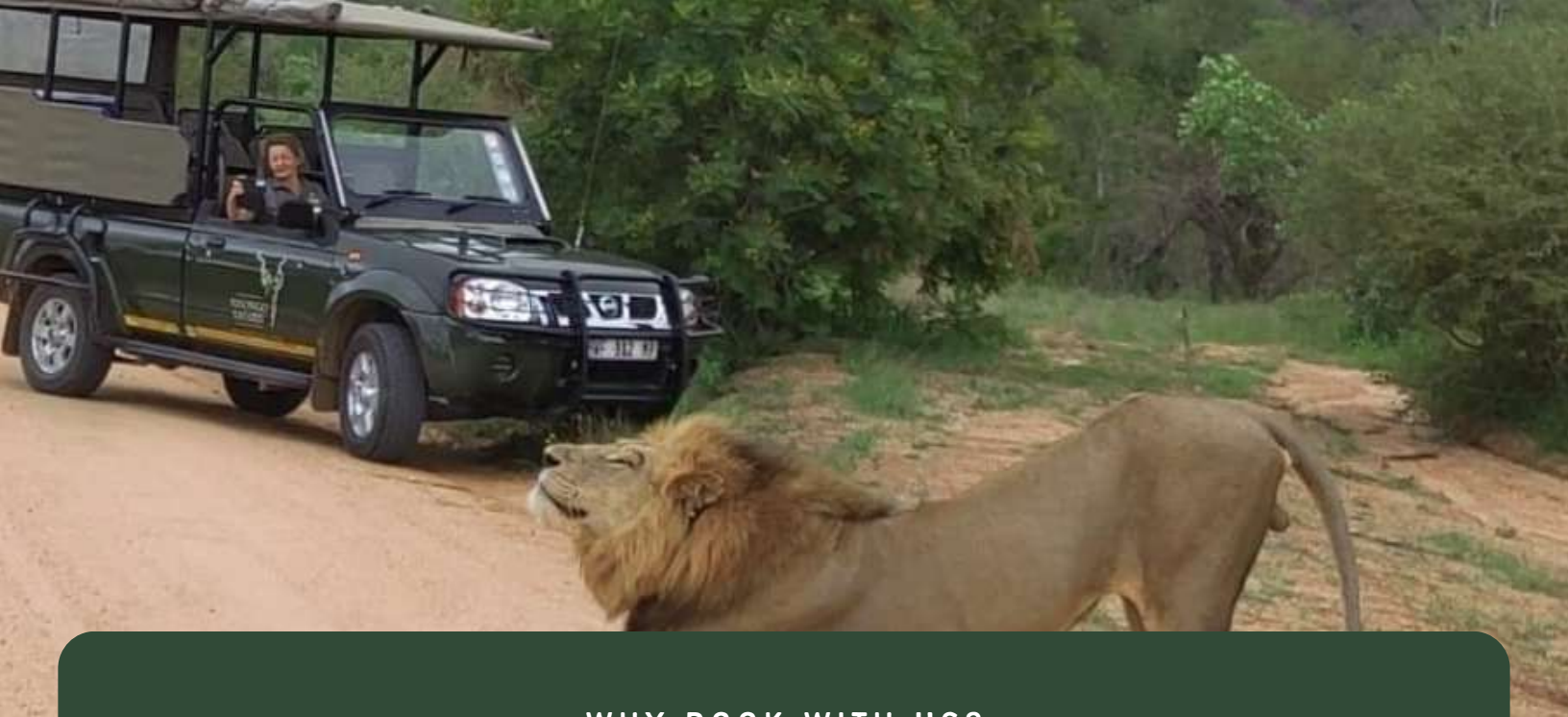


BUSH WALK

Up to eight guests are taken to interesting places in the surrounding wilderness areas adjacent to most of the camps. The walk itself is relaxed and experienced and armed guides use their knowledge of the bush to explain natural wonders. Bush walks leave at 04:30am. This activity is not permitted for anyone under the age of 13 Years.

CHILDREN

Children are welcome on this safari however due to safety and comfort, any children under 8 years of age, you will need to organize a private safari tour for your group, with no other guests onboard. Children under 12 years pay 50% of the adult rate. Children 12 years and above pay the full adult rate. Children under 13 years are not permitted on bush walks due to safety.



WHY BOOK WITH US?

- Guaranteed Departure with a minimum of two guests daily
- You save money – it costs less to book with us. No booking fees. No credit card surcharge
- Enjoy exceptional personalized service from your dedicated consultant
- Seamless travel arrangements – no travel stress
- Full financial protection – travel with confidence

WHAT TO PACK?

- Sunglasses & Hat & Sunscreen
- Closed shoes or open sandals (No high heel shoes)
- Jacket for early mornings and evenings
- Camera, Binoculars, Flashlight
- Passport for entrance procedures
- Bug repellent – can be purchased in camp