



## 6 DAY KRUGER MANYELETI SAFARI

This safari package visits the Kruger Park and Ndzhaka Bush Lodge in the Manyeleti Game Reserve joining the Kruger National Park.

Guests on this safari package can look forward to an unforgettable wildlife experience as they explore two of South Africa's most iconic game reserves.

The Kruger National Park is renowned for its diverse ecosystem and impressive Big Five sightings, while the Ndzhaka Bush Lodge offers a more exclusive and intimate safari experience in the Manyeleti Game Reserve. With expert guides and luxurious accommodation, this safari package promises to be the ultimate African adventure.



## COLLECTION & DROP OFF

### Collection For Your safari:

You will be picked up by your driver from your hotel in Johannesburg at 06h00am and be transferred to OR Tambo Airport to connect with our partner shuttle by 06h45am. Five or more guests will be transferred by Nhongo Safaris private shuttle.

Once in Nelspruit meet up with your guide and open safari vehicle and make your way to the Kruger National Park check in to your accommodation is at 14h00pm.

### Drop Off After Your Safari:

Our departure from the Kruger National Park takes place after breakfast and exits the camp by 10h30am , and we arrive back in Johannesburg between 16h00 and 18h00pm.



## DAY TO DAY SUMMARY

DAY

1

### JOHANNESBURG - KRUGER PARK

ENTERING THE KRUGER PARK THROUGH ONE OF THE MANY ENTRY GATES IN THE SOUTH WE STOP OFF FOR LUNCH. AFTER REFUELING OUR BODIES WITH A QUICK BITE, WE SET OFF ON OUR ADVENTURE. THE VASTNESS OF THE KRUGER PARK IS IMMEDIATELY APPARENT AS WE DRIVE DEEPER INTO THE PARK, WITH ENDLESS STRETCHES OF AFRICAN BUSHVELD AS FAR AS THE EYE CAN SEE. THE EXCITEMENT OF SPOTTING WILDLIFE AT ANY MOMENT KEEPS US ON EDGE, AND WE EAGERLY SCAN THE LANDSCAPE FOR ANY MOVEMENT OR SIGN OF LIFE. THE ANTICIPATION BUILDS AS WE MAKE OUR WAY TO OUR FIRST OVERNIGHT CAMP, EAGER TO SEE WHAT THE NIGHT HAS IN STORE FOR US.

DAY

2

### KRUGER PARK - MANYELETI

AS WE DRIVE THROUGH THE PARK, THE EARLY MORNING LIGHT FILTERS THROUGH THE TREES, CASTING A GOLDEN GLOW OVER THE LANDSCAPE. THE AIR IS STILL COOL AND



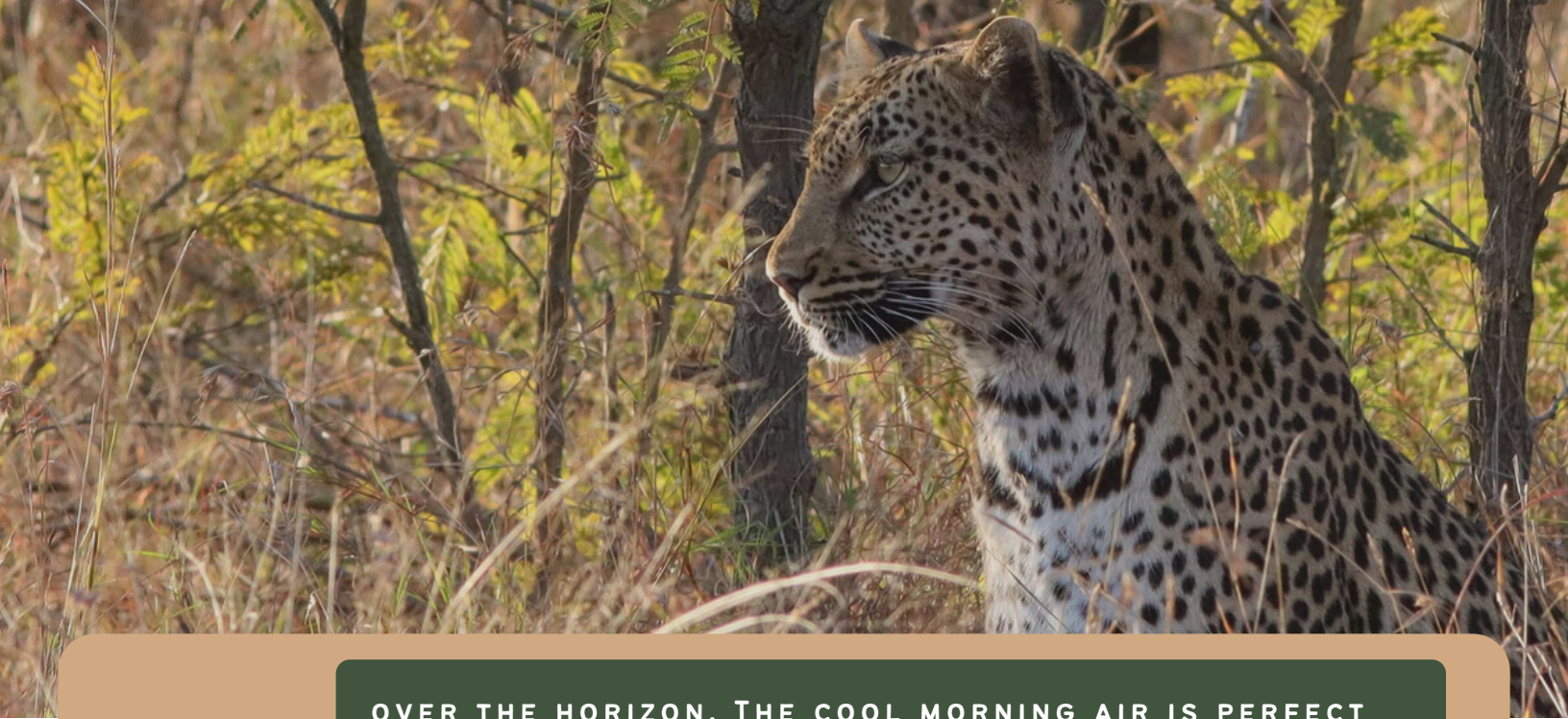
CRISP, AND WE CAN HEAR THE SOUNDS OF BIRDS AND ANIMALS WAKING UP FOR THE DAY. WE KEEP OUR EYES PEELED FOR ANY SIGNS OF WILDLIFE, HOPING TO CATCH A GLIMPSE OF A LEOPARD OR A PRIDE OF LIONS. AS WE APPROACH THE PICNIC AREA FOR BREAKFAST, WE CAN ALREADY SMELL THE AROMA OF FRESHLY BREWED COFFEE AND SIZZLING BACON. WE PARK THE CAR AND SET UP OUR BREAKFAST SPREAD, ENJOYING THE PEACEFUL SURROUNDINGS. AFTER BREAKFAST WE CONTINUE OUR GAME DRIVE EXITING THROUGH THE ORPEN GATE AND MAKE OUR WAY TO MANYELETI GAME RESERVE. MANYELETI IS KNOWN FOR ITS VAST HERDS OF ELEPHANTS AND BUFFALOES, AS WELL AS ITS ELUSIVE LEOPARDS AND CHEETAHS. WE KEEP OUR EYES PEELED, SCANNING THE HORIZON FOR ANY SIGNS OF MOVEMENT. WE DRIVE ALONG THE WINDING DIRT ROADS, TAKING IN THE BREATHTAKING SCENERY AND LISTENING TO THE SOUNDS OF NATURE ALL AROUND US. WE'LL CHECK IN LATE AFTERNOON TO NDZHAKA BUSH LODGE.

DAY

3

### MANYELETI GAME RESERVE

A SUNRISE GAME DRIVE DEPARTS AT 5H30AM FOR THREE HOURS RETURNING TO CAMP FOR BREAKFAST. DURING THE GAME DRIVE, GUESTS HAVE THE OPPORTUNITY TO WITNESS THE AFRICAN SAVANNAH COME TO LIFE AS THE SUN RISES



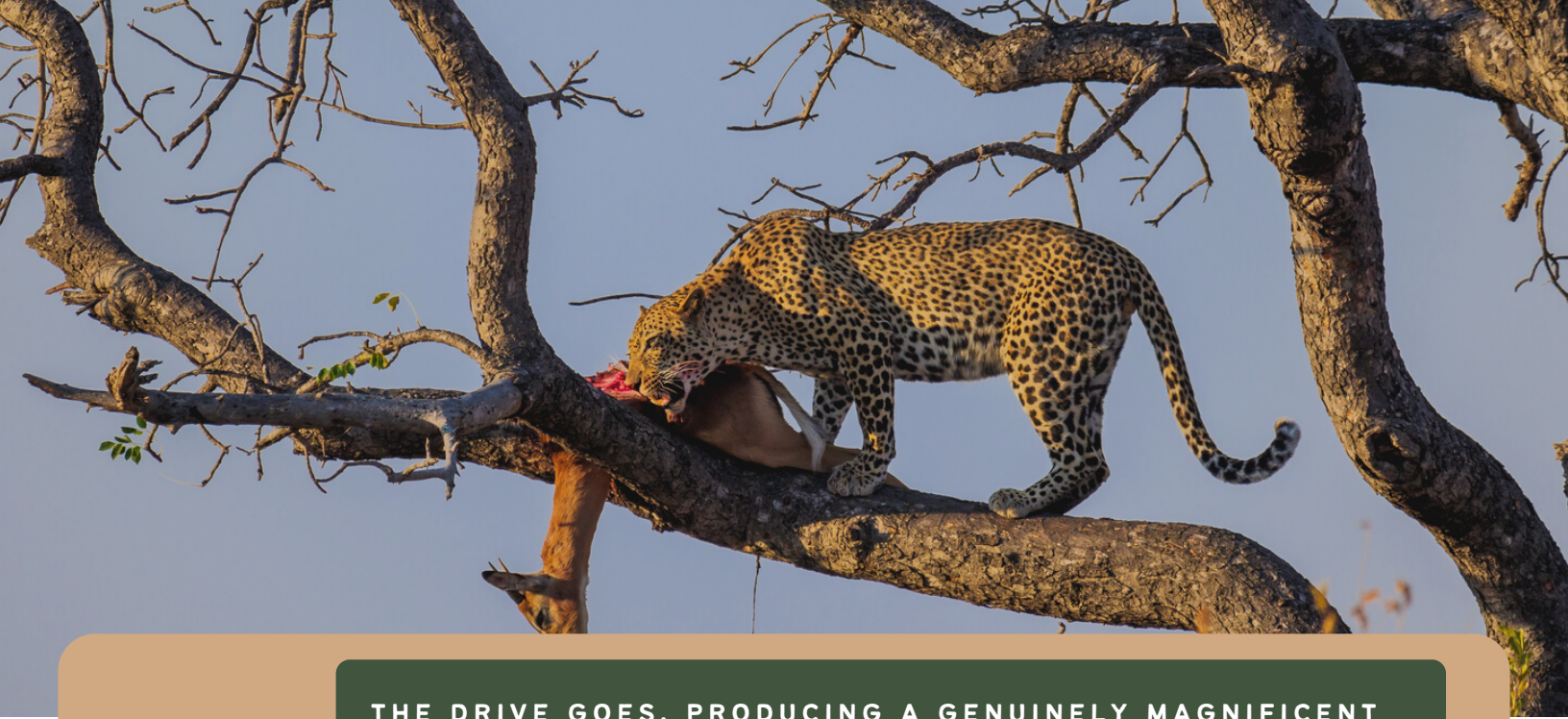
OVER THE HORIZON. THE COOL MORNING AIR IS PERFECT FOR SPOTTING WILDLIFE AS THEY START THEIR DAY. AS THE DRIVE PROGRESSES, THE LANDSCAPE CHANGES AND THE COLORS OF THE SKY TRANSFORM, CREATING A TRULY MAGICAL EXPERIENCE. LUNCH IS SERVED BY 14H00PM AND YOUR SUNSET DRIVE DEPARTS AT 15H30PM RETURNING TO CAMP FOR DINNER. DURING THE SUNSET DRIVE, THE AFRICAN BUSH COMES ALIVE WITH A DIFFERENT ENERGY. THE GOLDEN HOUR PROVIDES THE PERFECT LIGHTING FOR CAPTURING STUNNING PHOTOGRAPHS OF THE LANDSCAPE AND WILDLIFE. AS THE SUN SETS, THE NOCTURNAL ANIMALS START TO EMERGE AND THE GUIDES WILL USE THEIR SPOTLIGHTS TO SEARCH FOR THEM. AFTER THE DRIVE, GUESTS CAN ENJOY A DELICIOUS DINNER UNDER THE STARS BEFORE RETIRING TO THEIR ROOMS

DAY

4

#### MANYELETI GAME RESERVE

A MORNING GAME DRIVE DEPARTS AT 5:30AM AND LASTS THREE HOURS BEFORE RETURNING TO CAMP FOR BREAKFAST. DURING THE GAME DRIVE, GUESTS MAY SEE THE AFRICAN SAVANNAH COME TO LIFE AS THE SUN RISES OVER THE HORIZON. THE COLD MORNING AIR IS IDEAL FOR OBSERVING WILDLIFE AS THEY BEGIN THEIR DAY. THE TERRAIN VARIES AND THE COLORS OF THE SKY VARY AS



THE DRIVE GOES, PRODUCING A GENUINELY MAGNIFICENT EXPERIENCE. LUNCH IS PROVIDED BY 14H00PM, AND YOUR SUNSET DRIVE DEPARTS AT 15H30PM, RETURNING TO CAMP FOR DINNER. THE AFRICAN BUSH COMES ALIVE WITH A NEW ENERGY DURING THE EVENING DRIVE. THE GOLDEN HOUR PROVIDES IDEAL LIGHTING FOR PHOTOGRAPHING THE SCENERY AND WILDLIFE. AS THE LIGHT SETS, THE NOCTURNAL ANIMALS BEGIN TO EMERGE. AFTER THE JOURNEY, GUESTS CAN SAVOR A DELECTABLE DINNER OUTSIDE BEFORE RETIRING TO THEIR ROOMS.

DAY

5

## MANYELETI - KRUGER PARK

AFTER A GOOD NIGHTS REST, WE DEPART EARLY ONCE AGAIN FOR AN EARLY MORNING GAME DRIVE, RETURNING TO CAMP FOR BREAKFAST, WHICH IS ALWAYS A HEARTY AND DELICIOUS SPREAD OF FRESH FRUITS, CEREALS, EGGS, BACON, SAUSAGES, AND TOAST. AS WE SIT SIPPING ON OUR COFFEE AND ENJOYING THE BEAUTIFUL SCENERY, OUR GUIDE BRIEFS US ON THE PLAN FOR THE DAY. TODAY, WE WILL BE HEADING TOWARDS THE RIVER IN SEARCH OF SOME OF THE LARGER ANIMALS THAT ARE KNOWN TO GATHER THERE. THE ANTICIPATION BUILDS AS WE SET OFF ON OUR ADVENTURE, EAGER TO SEE WHAT THE DAY WILL BRING. CHECK IN WILL BE LATE AFTERNOON AND DINNER AT 19H00PM IN THE RESTAURANT.



DAY

6

## KRUGER PARK - JOHANNESBURG

IT'S TIME THIS MORNING FOR YOUR LAST GAME DRIVE. YOU WAKE UP BEFORE SUNRISE, EAGER TO CATCH A GLIMPSE OF THE WILDLIFE BEFORE THEY RETREAT INTO THE SHADE FOR THE DAY. THE AIR IS COOL AND CRISP, A WELCOME RELIEF FROM THE SCORCHING SUN THAT WILL SOON BEAT DOWN ON THE SAVANNAH. AS YOU CLIMB INTO THE SAFARI VEHICLE, YOU CAN FEEL THE EXCITEMENT BUILDING IN YOUR CHEST. YOU'VE SEEN SO MUCH ALREADY ON THIS TRIP, BUT YOU KNOW THERE'S ALWAYS THE CHANCE FOR SOMETHING NEW AND UNEXPECTED. THE GUIDE STARTS THE ENGINE AND YOU SET OFF INTO THE WILDERNESS, READY FOR WHATEVER THE DAY MAY BRING. ENJOY YOUR MORNINGS BREAKFAST AND DRIVE IN THE PARK BEFORE DEPARTING BY 10H00AM AND SLOWLY MAKING OUR WAY BACK TO NELSPRUIT TO CHANGE OVER TO YOUR TRANSFER VEHICLE BACK TO JOHANNESBURG ARRIVING LATE AFTERNOON.



## SAFARI INCLUDES

- 2 Nights Accommodation Kruger Park
- 3 Nights Accommodation Ndzhaka Bush Camp
- Collection & Drop Off in Johannesburg or Nelspruit
- Open Vehicle Game Drives
- Daily Conservation/Entrance Fees
- 5 x Dinners
- 5 x Breakfasts
- 2 x Lunches

## SAFARI EXCLUDES

- Flights
- Gratuities
- Items of a Personal Nature
- Visas and Airport Tax





## ACCOMMODATION

This Safari includes two nights accommodation within the Kruger National Park and 3 nights accommodation at Ndzhaka Bush Lodge in Manyeleti Game Reserve. The rooms are cleaned and serviced daily and feature twin beds and bathroom en-suite.

## MEALS

5 Dinners, 5 Breakfasts and 2 Lunches are included in the package. There are restaurant facilities available all serving hot delicious food and beverages



## GAME DRIVES

All daily Game Drives are included in the package and are conducted in open aired safari vehicles accompanied by an expert guide. The Open Safari vehicles have blankets and ponchos onboard for any weather changes.

## CHILDREN

Children are welcome on this safari however due to safety and comfort, any children under 8 years of age, you will need to organize a private safari tour for your group, with no other guests onboard. Children under 12 years pay 50% of the adult rate. Children 12 years and above pay the full adult rate. Children under 13 years are not permitted on bush walks due to safety.



## WHY BOOK WITH US?

- Guaranteed Departure with a minimum of two guests daily
- You save money – it costs less to book with us. No booking fees. No credit card surcharge
- Enjoy exceptional personalized service from your dedicated consultant
- Seamless travel arrangements – no travel stress
- Full financial protection – travel with confidence

## WHAT TO PACK?

- Sunglasses & Hat & Sunscreen
- Closed shoes or open sandals (No high heel shoes)
- Jacket for early mornings and evenings
- Camera, Binoculars, Flashlight
- Passport for entrance procedures
- Bug repellent – can be purchased in camp