



# Safari

## ITINERARY

### 4 DAY RHULANI LODGE SAFARI

Madikwe Game Reserve consists of vast open plains of woodlands and grasslands. The reserve is dissected by the rugged Rant van Tweedepoort and is bordered in the south by the Dwarsberg Mountains. The reserve has been enclosed in a 150 km perimeter electric fence to prevent the escape of larger animals.

Rhulani Safari Lodge, situated in Madikwe Game Reserve, is set along a crest with commanding stunning vistas of Madikwe. The lodge offers 5 star luxury accommodation in a malaria free environment. Early morning and late afternoon game drives will give you the opportunity to view a wide variety of wildlife species, including the legendary Big 5 mammals.

Flights to Madikwe Game Reserve are done by our supplier Federal Airlines.

You will be welcomed on your arrival at Johannesburg OR Tambo Int'l Airport and escorted to the departure lounge.



## COLLECTION & DROP OFF

### Collection For Your safari:

You will be picked up by your driver from your hotel in Johannesburg at 09h00am and be transferred to Rhulani Lodge. Check in to your accommodation is at 14h00pm.

### Drop Off After Your Safari:

Our departure from Rhulani Lodge takes place after breakfast and exits the camp by 10h30am.





## DAY TO DAY SUMMARY

DAY

1

### JOHANNESBURG - RHULANI LODGE

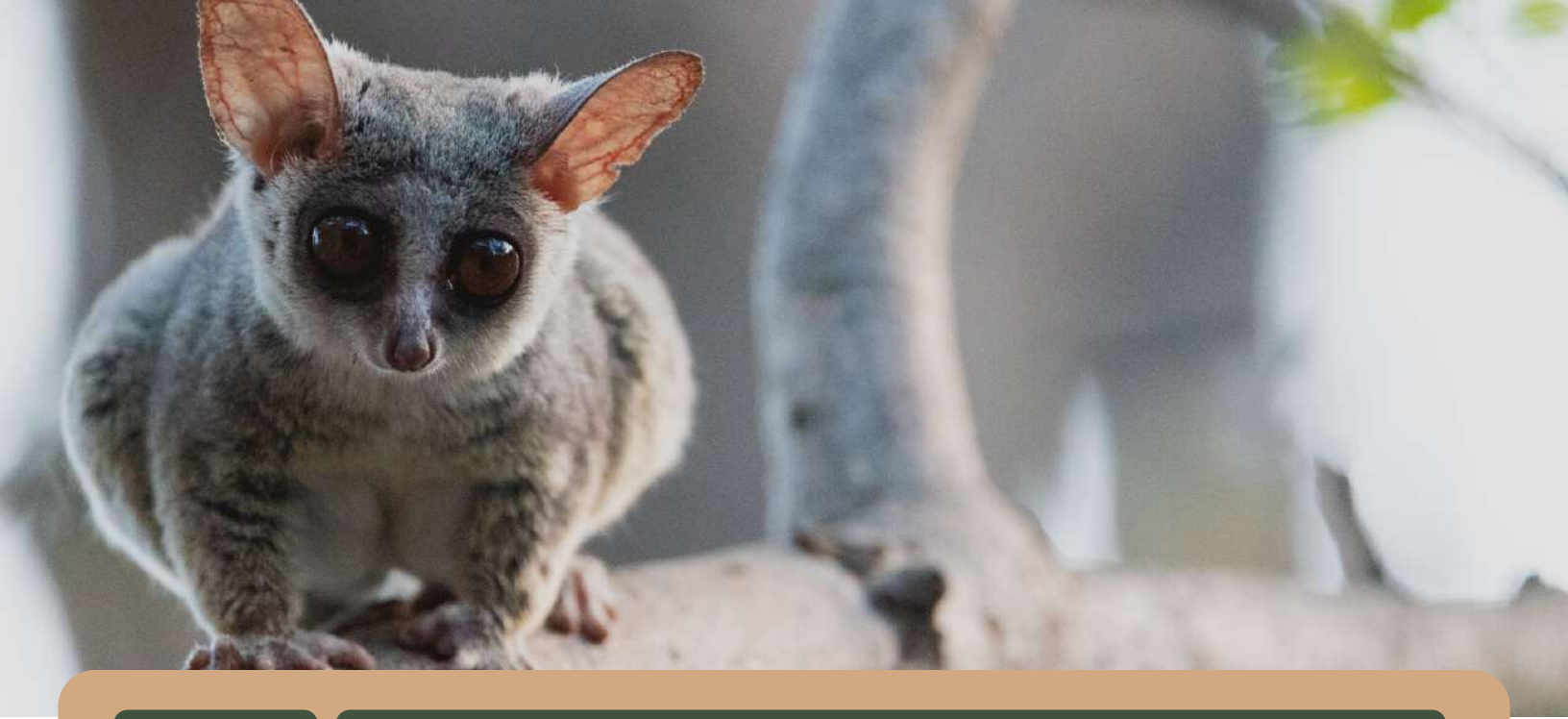
WE ARRANGE YOUR AIR TRANSFER FROM JOHANNESBURG DEPARTING AT 13H00PM FROM OR TAMBO SHUTTLE BUS TERMINAL FROM THE FEDERAL AIR OFFICE. PLEASE MAKE SURE TO BE THERE BY 11H45AM THE LATEST TO AVOID MISSING YOUR FLIGHT. ENJOY HIGH TEA AND READY YOURSELF FOR THE AFTERNOON/EVENING GAME DRIVE. EAT A FABULOUS BUSH DINNER IN THE BOMA.

DAY

2

### MADIKWE GAME RESERVE

YOU WILL RISE JUST BEFORE DAWN AND HAVE TEA OR COFFEE AND A QUICK SNACK BEFORE SETTING OFF ON A MORNING GAME DRIVE. YOU WILL RETURN TO THE LODGE IN TIME FOR A HEARTY BREAKFAST OR BRUNCH. YOU'LL HEAD OUT ON YOUR AFTERNOON GAME DRIVE, WHICH MAY CONTINUE UNDER THE COVER OF DARKNESS. YOUR DAY WILL INVARIABLY END WITH A DIVINE DINNER



DAY

3

### MADIKWE GAME RESERVE

YOU WILL RISE JUST BEFORE DAWN AND HAVE TEA OR COFFEE AND A QUICK SNACK BEFORE SETTING OFF ON A MORNING GAME DRIVE. YOU WILL RETURN TO THE LODGE IN TIME FOR A HEARTY BREAKFAST OR BRUNCH. YOU'LL HEAD OUT ON YOUR AFTERNOON GAME DRIVE, WHICH MAY CONTINUE UNDER THE COVER OF DARKNESS. YOUR DAY WILL INVARIABLY END WITH A DIVINE DINNER

DAY

4

### MADIKWE - JOHANNESBURG

TODAY WILL BE ANOTHER EARLY START FOR A FINAL MORNING GAME DRIVE IN THE RESERVE AND, HOPEFULLY, SOME MEMORABLE SIGHTINGS TO CAP OFF YOUR STAY IN MADIKWE. AFTER THE DRIVE YOU'LL EAT BREAKFAST AT YOUR LODGE AND THEN BE TRANSFERRED BACK TO OR TAMBO AIRPORT BY FEDERAL AIR.



## SAFARI INCLUDES

- 3 Night Accommodation at Rhulani Lodge
- Collection & Drop Off in Johannesburg
- Open Vehicle Game Drives
- Entrance Fees
- 3 x Dinners
- 3 x Breakfasts

## SAFARI EXCLUDES

- Flights
- All Drinks
- Gratuities
- Items of a Personal Nature
- Visas and Airport Tax





## ACCOMMODATION

This Safari includes three nights accommodation at Rhulani Lodge. These units are cleaned and serviced daily and feature twin or double beds, air-conditioning.

## MEALS

3 Dinners & 3 Breakfasts are included in the package. There are restaurant facilities available all serving hot delicious food and beverages.



## GAME DRIVES

All daily Game Drives are included in the package and are conducted in open aired safari vehicles accompanied by an expert guide. The Open Safari vehicles have blankets and ponchos onboard for any weather changes.

## CHILDREN

Children 6 - 11 Years are welcome



## WHY BOOK WITH US?

- Guaranteed Departure with a minimum of two guests daily
- You save money – it costs less to book with us. No booking fees. No credit card surcharge
- Enjoy exceptional personalized service from your dedicated consultant
- Seamless travel arrangements – no travel stress
- Full financial protection – travel with confidence

## WHAT TO PACK?

- Sunglasses & Hat & Sunscreen
- Closed shoes or open sandals (No high heel shoes)
- Jacket for early mornings and evenings
- Camera, Binoculars, Flashlight
- Passport for entrance procedures
- Bug repellent – can be purchased in camp